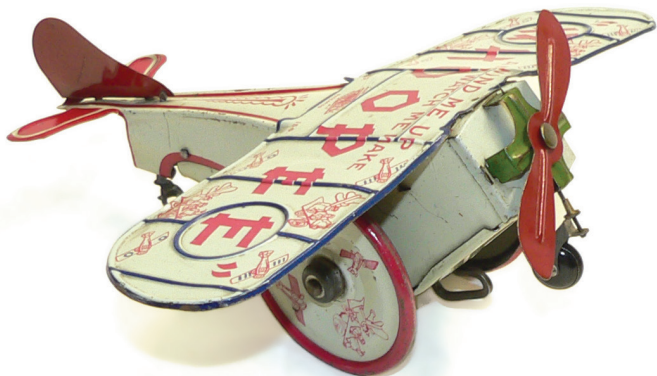


FIRST MONDAY TOY AUCTION SEPTEMBER 5th 2016

Featuring

- Lots of Meccano including some excellent sets
- Live steam stationary and traction engines & accessories
- Huge selection of planes including tinplate, diecast and kits
- Diecast cars including a good selection of Australian 1:18 models
- Tinplate cars from Germany, Japan & England
- Diecast figures including Britains cowboys, soldiers & zoo animals
- Tin toys including Marx, Lehmann & Arnold
- O-gauge including Bassett-Lowke, ACE, Exley & Hornby
- American O-gauge
- HO/OO-gauge from Hornby, Tri-ang, Lima & Tenshodo
- Vintage games & toys



Featured item: Lot 100
Nonpareil tinplate Aeroplane
"Wind Me Up and Watch Me Make Whoopee"

Welcome to our First Monday Toy Auction for September. We have a wonderful mixture this month including some unusual and hard-to-get items. Of course we have Trains, Planes and Automobiles... but there are lots of other interesting toys and collectables, as you can see from the list of highlights – and you'll see much more in the catalogue. We've said it before and we'll say it again: there's something for everyone.

As always, viewing is open this Saturday at our Annandale gallery from 10:00am to 4:00pm, and on the auction day next Monday from 3:00pm at the auction venue. Absentee bids can be left at any time before the auction by phone, email, in person or on our website. Telephone bidding is also available by prior arrangement (there are a few conditions – give us a call for more information).

The auction starts at 7:00pm next Monday at our Mount Victoria venue. This is a public auction, so everyone is welcome. If you can't join us in person, you can watch and bid online at invaluable.com, or leave absentee bids before the auction.

Please see below for important information about changes to auction fees.

If you have any questions, please call us on (02) 4787 7974 or send us an email.

THIS MONTH'S NEWS FROM TPA

More diecast!

Later this month we'll be holding another "quiet auction". Like last month's "Just Diecast" auction it will be a **specialty diecast car auction**, so we're calling it – inventively – "**More Diecast**". This auction will be held on **Monday 26th September** and will feature diecast cars mostly in 1:43 scale from leading brands including **Trax, Dinky, Corgi** and **Matchbox**. Full details will be available soon after our regular auction next Monday. Lots can be viewed at Annandale on Saturday 24th September.

Changes to auction fees

Our online partner **Invaluable** has recently announced that it will **increase its fees** from the end of September. Its commission for online buyers will increase **from 3% to 5%**, and the fee that we pay for each online auction will **increase by 50%** to around \$700 at the current exchange rate. To help cover the extra cost but keep the impact on our customers to a minimum, **we will be increasing our buyer's premium** from 12.5% to... 13.5%. It's not the end of the world.

In short, bidders who purchase from Trains, Planes & Automobiles will pay a **13.5% premium**, and those who bid and purchase online will pay the **13.5% premium** plus the **5% online bidding fee**. We regret that we have to pass these increases on to our customers, but we are pleased that our buyer's premium remains one of the lowest in the industry (and note that the premium includes GST). The new fees will come into effect starting with our First Monday Toy Auction in October (which is actually on the second Monday – see below). Remember that you can place absentee bids directly with TPA – bids placed with TPA do not attract the 5% online bidding fee.

October... late but early!

Since the first Monday in October falls on the NSW holiday weekend and we will be making our usual appearance at the **Model Train Exhibition** in Sydney, we will not be holding an auction on October 3rd. Instead we will be holding it **one week later**, on **Monday October 10th**. Please put that in your diary and don't turn up a week early! If you're in Sydney on the weekend of October 1st to 3rd, come and visit us at the show. It's a big event with lots to see. You can find out more about it at amransw.asn.au/exhibition.

From our October auction onwards, we will be **changing our auction start time to 6:00pm**. It's a long night and this will give us the opportunity to finish a little earlier. Better put that in your diary, too, but we'll remind you again before October.

What's happening in the Blue Mountains

The **Blackheath 2017 Calendar** is now out, as always full of great historical photographs and information about Blackheath's past, including an article on Blackheath's historic TT race – very few people knew it even existed. Limited numbers are available from TPA for \$17.00 a copy.

Return of the Blackheath Rocket – Many Australians have fond childhood memories of the playground rocket in Blackheath Park, which was removed in the 1990s. Well, plans are afoot to install a new one and the Rotary Club of Blackheath is fundraising. To find out more, visit rotaryclubofblackheath.com.au.

This Saturday, the **Blue Mountains Radio Players** will be performing "**Arsenic and Old Lace**" at the **Paragon Cafe** in Katoomba. Have a day out in the Blue Mountains and enjoy a classic comedy in the historic art-deco Paragon at 65 Katoomba Street. The play starts at 2:00pm and admission is just \$15 including afternoon tea. Space is limited, so call (02) 4782 2828 to make a booking. If you're coming to the auction viewing in Annandale on Saturday, you won't find **Barry Masters** there, because he'll be at the Paragon starring in the play!

At our **Blackheath gallery** we've just received stock of **new scenic items** including gravel, ballast, trees, hedgerows, and grass. Our hobby supplies have become very popular for modellers and school projects, and we continue to expand our range to cater for the local demand. Our stock includes balsa, plastics, metals, glues, figures, buildings, and a variety of scenic materials. We are still the **only hobby shop in the Blue Mountains**, so for your hobby and modelling needs come and see us at 50 Govetts Leap Road, Blackheath, or call us on (02) 4787 7974.

From the team at TPA.



TRAINS, PLANES & AUTOMOBILES

Postal address: PO Box 126 Blackheath NSW 2785 Australia
Blue Mountains Gallery: 50 Govetts Leap Road Blackheath NSW 2785 Australia Phone: +61 (0)2 4787 7974
Sydney Gallery: 276A Johnston Street Annandale NSW 2038 Australia Phone: +61 (0)2 9818 1184
Email: info@antiquetoys.com.au Web: antiquetoys.com.au

Trains, Planes & Automobiles is a division of Adventures Extraordinaire Pty Ltd ABN 23 002 486 115