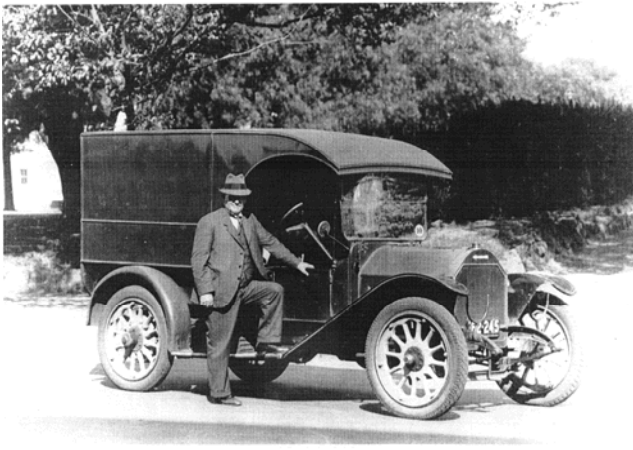


Welcome to our first newsletter for 2012, just in time to remind you about our 8th Great Train Weekend which is sure to live up to its name with enjoyment for everyone, young and old.

It follows another significant event for the village, when the 100th anniversary of the Titanic's sinking was commemorated with a showing of "Titanic" at Mount Vic Flicks followed by a "Titanic" dinner at the Blue Mountains Manor House.

This year is also the 100th birthday of our TPA Pathfinder Van which was hand crafted in 1912 and arrived from the USA that year. The Pathfinder was a Brass Era car built in Indianapolis, Indiana. After clocking up over 200,000 miles in its first three years it was purchased by Theo Bugg, who converted it to a panel van and Theo and his son used it to deliver rope and twine products throughout Victoria from 1916 to 1960. In this period the Pathfinder travelled another 880,000 miles, for a grand total of more than one million miles. A Pathfinder advertising slogan was "known for reliability".



The Pathfinder circa 1920 with the owner Theo Bugg (senior)

Another 100 years anniversary – in 1912 work started on the Inter-Continental Railway linking West Australia with the East coast of Australia.

Looking a little further ahead, we're also in the lead-up to the 200th anniversary of the crossing of the Beautiful Blue Mountains in 1813. Plans for the anniversary are well advanced, and several events will be held in 2013. We hope you enjoy catching up on our news and look forward to meeting you again soon at one of our gallery shops.

Keith, John, Jan, Leslie, Tadhg, Mitchell, Denise, Barry, Cherylin and Robert

Mount Victoria Gallery Renovation Sale

As we'll be rearranging our Mount Victoria Gallery in June, you may want to call before coming up to check we are open. We apologise for any inconvenience this might cause, but if you have an urgent need – say for that extra set of points or a can of Humbrol – give us a call. We'll help if we can.

That said, if you want to snag a bargain we will be offering 'renovation specials' from now on until renovations begin. There will be significant discounts off most of the stock on hand – the more we sell, the less we have to move! We will be back, revitalised for the July school holidays.

Have a look at our new Website

We hope you will find our new website quicker and easier to use. The on-line store is working at last and items are starting to appear. All previous newsletters can be viewed on the site.

While you're there check out the video "Vintage Clockwork Racing". This short entertaining video is one you won't forget, and probably a sporting event the like of which you have never seen before.

TPA at this year's Great Train Weekend

During this year's Great Train Weekend we will be operating a display at the model railway exhibition as usual. The exhibition is bigger this year thanks to the use of the new classrooms – don't forget to find them at the back of the school.

We will have plenty of bargains on show and of course our traditional "rust or bust" and "smash or crash" boxes of interesting things – get in early for the bargains.

We will be running O-gauge on Barry's famous 'Dog Bone' layout and even be giving out dog bones to any four legged friends who visit.

Barry is wearing his Antique Sound Society hat and can be seen at his display at the Manor House. See Barry demonstrate some amazing gramophones and more – really worth a visit.

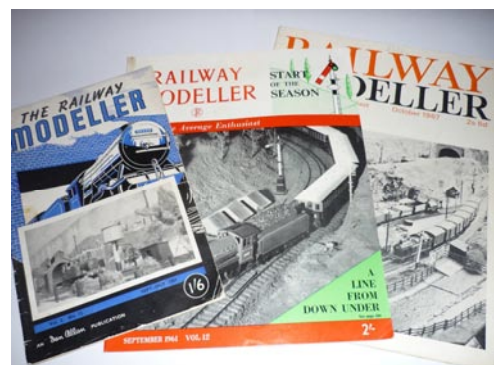
Please note Annandale gallery will be closed on the Friday and Saturday of the Great Train Weekend.

New things at TPA

Lots of new things have been coming in to the galleries of late, both vintage and new. Annandale's stock is growing with the addition of more O-gauge items. At Mount Victoria our 1-gauge selection has grown with the addition of some new Bachmann locos and rolling stock.

Railway Modeller

We have available a large collection of these wonderful old magazines dating from 1950 to 1973. These provide a comprehensive background on the early hobby and provide much reference material for collectors of the period. Apart from that they are fun to read and the old ads most informative. Priced from as little as \$10 per issue.



Don't forget to give clear instructions

Recently a staff member jested with a favourite customer about the use of a makeshift fuse. "If all else fails use a 3 inch nail," he said. Some weeks later the customer told him he'd tried the idea. "Things got very hot," the man said, adding that the transformer had failed. Further investigation revealed that the customer took the advice literally, unaware it was an old tradesman's joke!

Featured newsletter product

We recently received a magnificent factory painted HO brass Victorian S Class 4-6-2 Pacific Loco to sell on consignment.



This item was made in Korea in 1985 by Samhonga and sold originally by Broad Gauge Models. It is numbered 49 of a limited edition of 250. The loco is as new and has separate name and number boards so it can be made up into any of the four prototypes. It's probably Australia's most famous loco and its story featured recently in *Model Railways in Australia* (Issue 15). Let's know if you are interested.

TPA Auctions

Our auctions continue to be a major part of TPA's business, and some interesting items have been arriving for inclusion. A significant Marklin collection with over 1000 lots started in our May auction and will continue throughout the year. These items are in such good condition it's as if they've come straight from the factory. Our next auction will include a quantity of excellent Hornby and Ferris O-gauge items including a Ferris Express Parcel Van. We also have a large collection of Trax and other diecast items for auction as well as a collection of modern Sci-Fi items. If you are interested in turning your old toys into cash – give us a call.

It's just like being in the auction room

We're often asked how our on-line auctions work. They operate no differently to our in-room auction but without the live audience. Bidders can participate from home or anywhere with access to the internet. We operate the same way as any other auction, with an auctioneer and support staff to record, operate the internet console and manage telephone bidders.

We introduced both sound and video at our 'First Monday Toy Auction' in May. This allowed participants to "be in the room" with us.

To join the auction simply register to bid at artifact.com or you can just watch the action on the artifact site. Just before the auction starts click on the "watch" button. As usual you can inspect the lots at Annandale and leave bids or bid by phone.

Superman fans take note

A friend of TPA is selling a great house in Lois Lane -- yes, Lois Lane - so if you're interested in the ultimate address for fans of the Action Comics super hero, let's know and we can pass on details.

Anyone seen our TPA van?

It's nearly a year since our trusty old Toyota diesel Hi-Ace van was stolen from outside our Annandale shop just after last year's Great Train Weekend. Some significant toys and a coffee table size Z-gauge layout went missing along with the van. Missing items include, CMC Bugatti Atlantics, several excellent Minic cars, Wrenn and Dublo loco's and rolling stock, Hornby, Bing and other O and 1-gauge, including a rare boxed Leeds 4-4-0 tank loco, and more.

To date there's been no sign of the toys or our van. We're keen to hear from anyone with information about the missing van or the toys.

Meccano Sets arrive at Mt Vic

Recently we have made space for more than 20 Meccano sets now on sale. They include sets from the early nickel period up to the yellow and black era with many from the red and green times. Some are in excellent complete condition others may be missing a few pieces.

If you have received this newsletter and you no longer wish to be on our mailing list just email, fax, or phone and we will ensure you are removed from the list.

If you are reading this and want to be on our mailing list, please let us know.



We sell, buy, consign, value, auction, and repair antique (and new) toys and hobbies

Email: info@antiquetoys.com.au **Web:** www.antiquetoys.com.au

Gallery Shop – Blue Mountains

7 days 10.00 AM – 5.00 PM

86 Great Western Highway

Mount Victoria Beautiful Blue Mountains NSW 2786 Australia

Telephone: +61 (0)2 4787 1590

Fax: +61 (0)2 4787 1117

Gallery Shop – Sydney

Friday and Saturday 10.00 AM – 4.00 PM

276A Johnston Street

Annandale NSW 2038 Australia

Telephone: +61 (0)2 9818 1184

STOP PRESS:

As this newsletter is going to print we have learnt that a 620+720 DMU Railcar Set will be operating the Mt Vic – Katoomba and Mt Vic – Lithgow shuttle during the Great Train Weekend – perhaps someone shot the 'Tin Hare'?