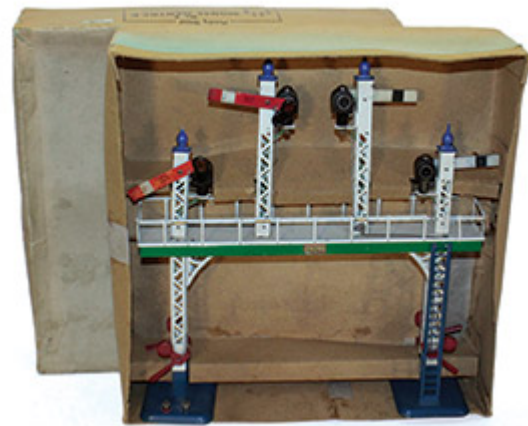


## First Monday Toy Auction

### August 3rd 2020

*Highlights include:*

- **1-gauge rolling stock and accessories**
- **Hornby O-gauge locomotives, rolling stock and accessories**
- **Australian O-gauge from Robilt and Ferris**
- **HO/OO from Hornby, Tri-ang, Bachmann, Lima and others**
- **Smaller trains including N-gauge, ZZ-gauge, Z-gauge, and even T-gauge**
- **Matchbox 1-75s and Yesteryears**
- **Large collection of Matchbox MICA Convention models**
- **Military vehicles including kits**
- **Collection of Arnott's Biscuits memorabilia**
- **Tin toys, Lego, novelty items and books**



Featured item: Lot 303  
Hornby Series O-gauge No. 2 Signal Gantry

We have a great line-up for you this month, with an interesting assortment of trains, cars and toys.

There are trains in so many sizes, from **1-gauge** for the garden railway enthusiasts, down to the tiny **T-gauge** (3mm) for those with less space and good eyesight. And of course a lot of sizes in between.

In cars we have a large range of **Matchbox** including Yesteryears, Collectibles, and 1-75s, notably the huge collection of **MICA Convention** vehicles which cover just about every convention in the UK, Europe, America and Australia. There's also a selection of **military vehicles** and kits.

The collection of **Arnott's memorabilia** includes quite a few biscuit tins, souvenir plates, a framed print, and several books.

We also have some more M&M's collectables, tin toys, games, a large amount of Lego, and various other curiosities. There's even a microscope, which might be useful for the people who get the T-gauge trains.

The auction starts at 6:00pm next Monday, August 3rd. Due to COVID-19 regulations, we have limited space for **floor bidders**. So if you would like to attend this auction, please contact us beforehand to **make a booking**.

You can also participate by sending us absentee bids before the auction, or bidding live online at [invaluable.com](http://invaluable.com). Telephone bidding is available by prior arrangement on lots

starting at \$100 or more.

The lots can be viewed in our Auction Rooms next Saturday from 10:00am to 4:00pm, and on the auction day from 10:00am to 4:00pm.

Follow the links below to view or download the catalogue and see further details. If you have any questions, please call us on (02) 4787 7974 or send us an email.

## THIS MONTH'S NEWS FROM TPA

### Coming up very soon

We still have so many great diecast vehicles to sell, we're going to squeeze an extra auction in this month. It will be another **Just Cars "quiet" auction**, featuring cars of all types and sizes, and a few trucks and fire engines as well. The auction will be held on **Monday 17th August** and we'll be in touch with more details before then.

### Steam, Smoke & Steel

If you haven't seen this superb oil painting yet, you should come in and have a look, or see it on our website. This is a large painting of the "**City of Lithgow**" **1072 locomotive**, which we're offering for sale by **Silent Auction**. Proceeds will go to the **Great Train Weekend**, which has been postponed, so we don't have a firm deadline yet for this auction. But there's been plenty of interest and the current high bid is \$1,600. Click here for full details, and if you'd like to place a bid, just call us on (02) 4787 7974 or send us an email.

### Our friends down the road

The **Leuralla Toy and Railway Museum** was closed for a while during the lockdown, but it's now up and running again. It's our favourite toy museum and if you've never been there, we highly recommend it. It houses an extraordinary world-class collection of toys of all types, and lots of trains including several working layouts.

The address is 36 Olympian Parade, Leura, and it's open every day from 10:00am to 5:00pm. If you visit on a Friday, the illustrious John Ross is on duty and will be happy to tell you everything about the toys! For more information visit [toyandrailwaymuseum.com.au](http://toyandrailwaymuseum.com.au).

### Volunteers wanted

If you haven't had the pleasure of running a model railway, here's your chance. **Roslyn's Model Railway** at Valley Heights is looking for volunteers to help during open days – and if you've never done it before, they will teach you. This is an amazing layout and one of the largest private railway collections in Australia, so it's well worth seeing. If you'd like to help, contact Roslyn on 0452 657 358 or [roslynmodels@gmail.com](mailto:roslynmodels@gmail.com).

### It's all happening at The Gearin

We've been in our new home at Katoomba for just over a year now, and we're continuing to make improvements in many ways. We've recently added more cabinets to our showroom so we can display more toys, and it's looking pretty good if we say so ourselves. Our shop is open on Mondays, Thursdays, Fridays and Saturdays from 10:00am to 4:00pm. If you're able to visit, we'd love to see you.

Our coffee shop "On the Soul Side" is also looking good and improving all the time. The

interior (and exterior) decorating continues, and plans are under way for an O-gauge train running around the ceiling! Trading hours have now been extended to Sundays, so you can come in for a great coffee and snack from Monday to Friday 7:00am to 1:00pm, or Sundays 8:00am to 3:00pm.

Overnight accommodation has been busy lately, especially during the school holidays. It's getting quieter now, so if you're looking for a place to stay in Katoomba – at very affordable rates – we can help you. If you're into trains, we can even give you a room overlooking Katoomba station. There's also the possibility of long-term accommodation, but only for people who like trains and toys.

So when you're visiting the **Beautiful Blue Mountains**, come to Katoomba and see all our wonderful toys, have a coffee, and maybe even stay or night or two. We can help you with all those things.

From the team at  
Trains, Planes & Automobiles.



Trains, Planes & Automobiles at The Gearin  
1 Goldsmith Place Katoomba NSW 2780  
Phone: (02) 4787 7974  
Email: [auctions@antiquetoys.com.au](mailto:auctions@antiquetoys.com.au)  
Web: [antiquetoys.com.au](http://antiquetoys.com.au)